

# PROJECT PARTNERS



17 partners from across the European Union as well as from Switzerland and Moldova.

- ❁ 5 Small and Medium Sized Enterprises (SMEs)
- ❁ 3 Research, University and Non-profit Organisations
- ❁ 1 Large Enterprise
- ❁ 1 State Owned Consultancy
- ❁ 2 Customs Authorities
- ❁ 5 Border and Coast Guard Authorities



CERTH  
CENTRE FOR RESEARCH & TECHNOLOGY HELLAS



Isdefe



Agencia Tributaria



HELLENIC REPUBLIC  
MINISTRY OF MARITIME  
AFFAIRS & INSULAR POLICY



WOITSCH CONSULTING

# CONTACT US



For enquiries about CONNECTOR,  
please visit

[www.connector-project.eu/contact](http://www.connector-project.eu/contact)

or send an email to the

Project Coordinator  
Dr. Souzanna Sofou  
[s.sofou@satways.net](mailto:s.sofou@satways.net)



CONNECTOR is a Horizon Europe funded research project, running for two years from 01 October 2023 with a grant of approximately EUR 4.15 million from the European Union and Switzerland.



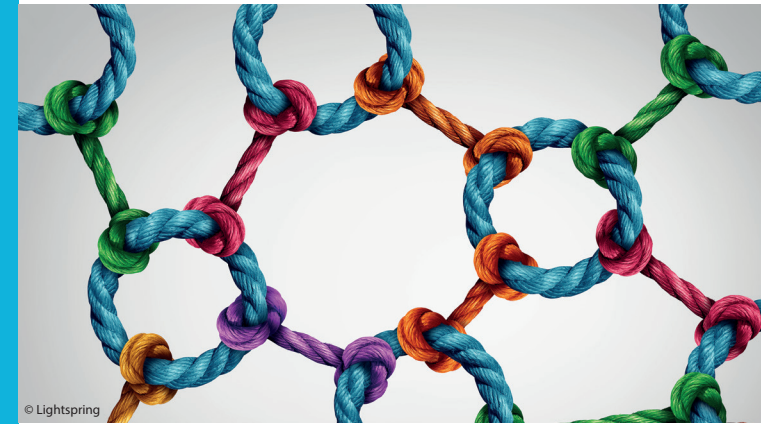
Co-funded by  
the European Union

Funded by the European Union. Views and opinions expressed are however those of the author(s) only and do not necessarily reflect those of the European Union or the European Research Executive Agency. Neither the European Union nor the granting authority can be held responsible for them.



## CONNECTOR

CustOms exteNded iNteroperable  
Common informaTiOn shaRing  
environment



© Lightspring



Enhance EU land and sea border control with a powerful, integrated C2 system interoperable with CE-CISE



Improved common operational picture and situational awareness



Strengthen cooperation between Customs, Border and Coast Guard Authorities



Contribute to European Integrated Border Management and EU Customs Action Plan



Co-funded by  
the European Union

# Integrated Border Management



The fundamental objective of the CONNECTOR project is to enhance European Integrated Border Management (EIBM) and the EU Customs Action Plan by further strengthening cooperation between Customs, Border and Coast Guard Authorities, including FRONTEX.

The Common Information Sharing Environment (CISE) is a cornerstone in European efforts to improve coordinated border management outcomes, practices and service performance, all the while ensuring the smooth and uninterrupted regular flow of goods and people.

## End User Trials



To assess and validate the solutions in simulated real-life operational environments, we will conduct three national and cross-border use-case trials during 2025.

These are categorised into three distinct phases, each tailored to specific testing environments and principles - National, Cross-border and Transnational.

**National:** The testing principles revolve around short-scale scenarios, with preliminary testing conducted in the maritime environment.

**Cross-border:** The cross-border phase delves into a land border environment, specifically in non-EU and non-Schengen regions.

**Transnational:** The scenario is on a larger scale and involves testing in both land and maritime settings. Information exchange will be a complex task involving seven IBM authorities, encompassing both EU and non-EU entities, and conducted through the CE-CISE interoperability layer.

To discover more about CONNECTOR, please visit the website and watch the CONNECTOR video on YouTube



## Key Objectives

- ❖ **Customs-Enhanced CISE Model:** CONNECTOR develops the CE-CISE model and the associated entities to ensure seamless communication among EIBM authorities and their interoperability with the latest Customs IT systems.
- ❖ **Common Risk Indicators:** The project identifies common risk indicators for Customs and Border & Coast Guard Authorities.
- ❖ **Improved Situational Awareness:** CONNECTOR revolutionises the situational awareness for Customs and Border & Coast Guard Authorities.
- ❖ **Command and Control Systems (C2):** The project offers dedicated Command and Control System Instances for all end user types.

## Technical Innovations

The project's technical teams are developing the following innovations:

- CE-CISE for secure, interoperable data sharing between EU Customs and Border authorities
- Interoperability frameworks in border and customs domains
- Command and Control systems in border and customs domains
- Common risk assessment tools and natural language processing (NLP)
- Decision support systems dedicated to Customs and Border Guards
- Data fusion techniques with digital twin functionalities
- Data analytics and data lakes

## Development of CE-CISE

The results of the two-year project will be the design and development of the Customs Extended Common Information Sharing Environment, or CE-CISE.

Interoperable with existing CISE systems, the CONNECTOR system will provide an improved level of situational awareness and common operational picture, supporting better-informed decision-making by national and joint response incident commanders.

CE-CISE will deliver an integrated, shared risk assessment approach, ensuring effective management of EU external borders at operational, tactical & strategic levels. The end result will facilitate close and practical cooperation and information exchange, crucially at both inter-agency and transnational levels, leading to safer borders for Europe.